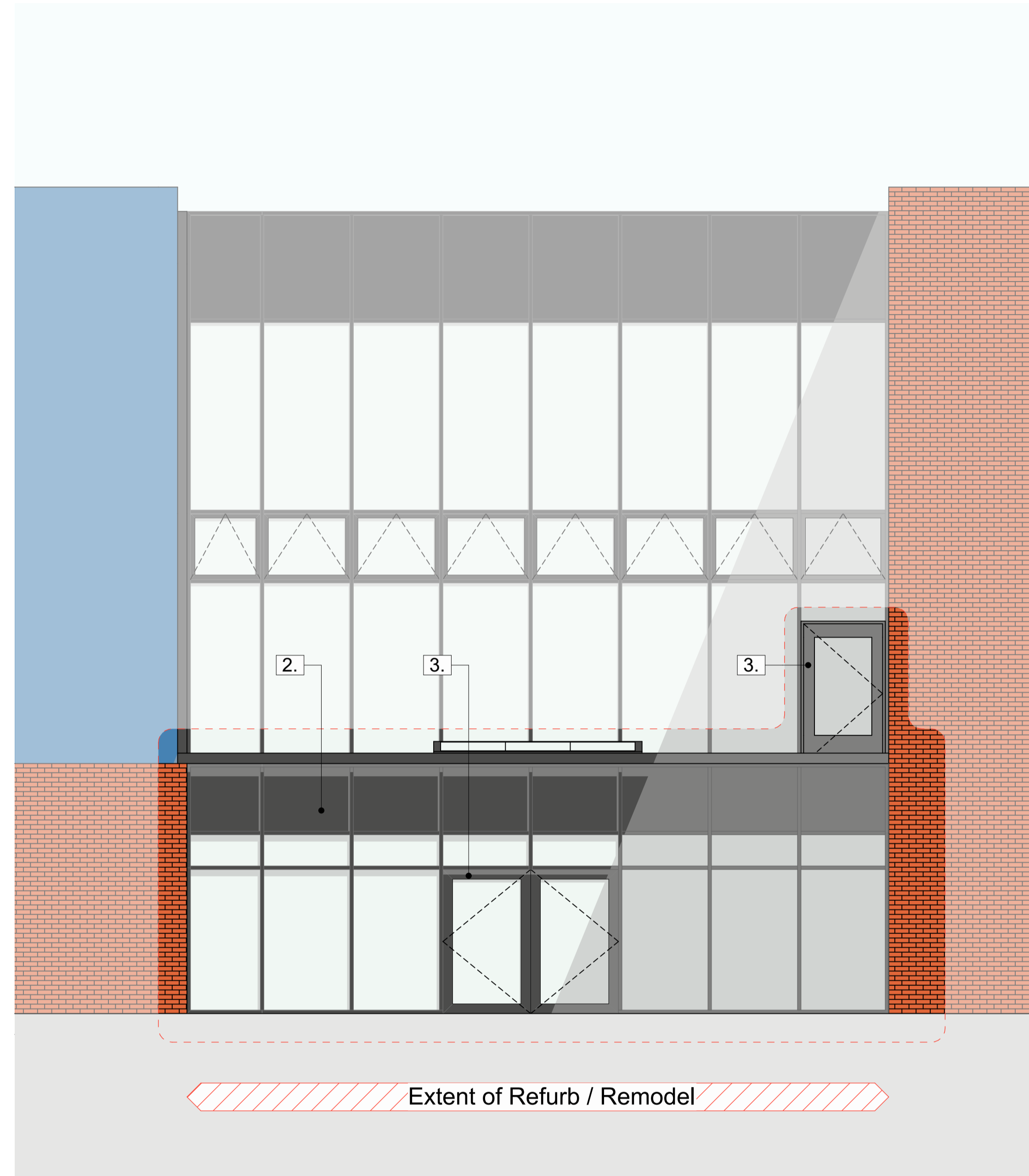
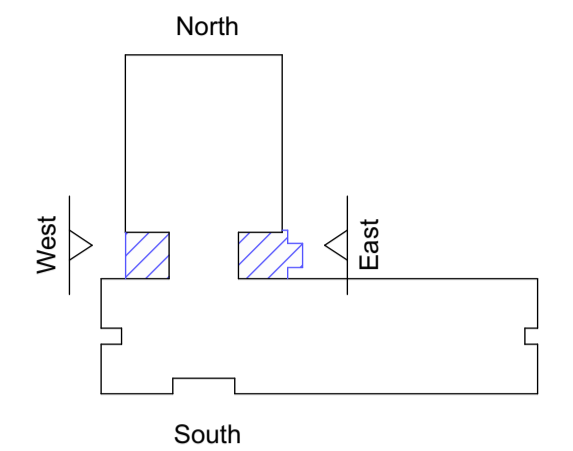




1:50 East Elevation



1:50 West Elevation



KEY

- 1. Non-combustible Cladding
- 2. PPC Glazing System
- 3. PPC External Door

Note: Existing building information provided by others.

P01	Planning Issue	NH	BR	18/08/2021
rev	description	drawn	checked	date

B

BOND BRYAN
 i2 Business Centre 2 Snow Hill Birmingham
 West Midlands B4 6GA UK
 t 0207 812 0601
 e info@bondbryan.co.uk
 w www.bondbryan.co.uk

Willmott Dixon
Holy Trinity School
Holy Trinity Academy School

Proposed GA Elevations

Originator project ref 21092	Purpose of Issue Design
Scale(s) 1:50	Status S1 Suitable for Planning
Paper size A1	Revision P01 Preliminary

project	originator	volume	level	type	role	number	status	revision
HTAT	BBA	DH	ZZ	DR	A	3201	S1	P01